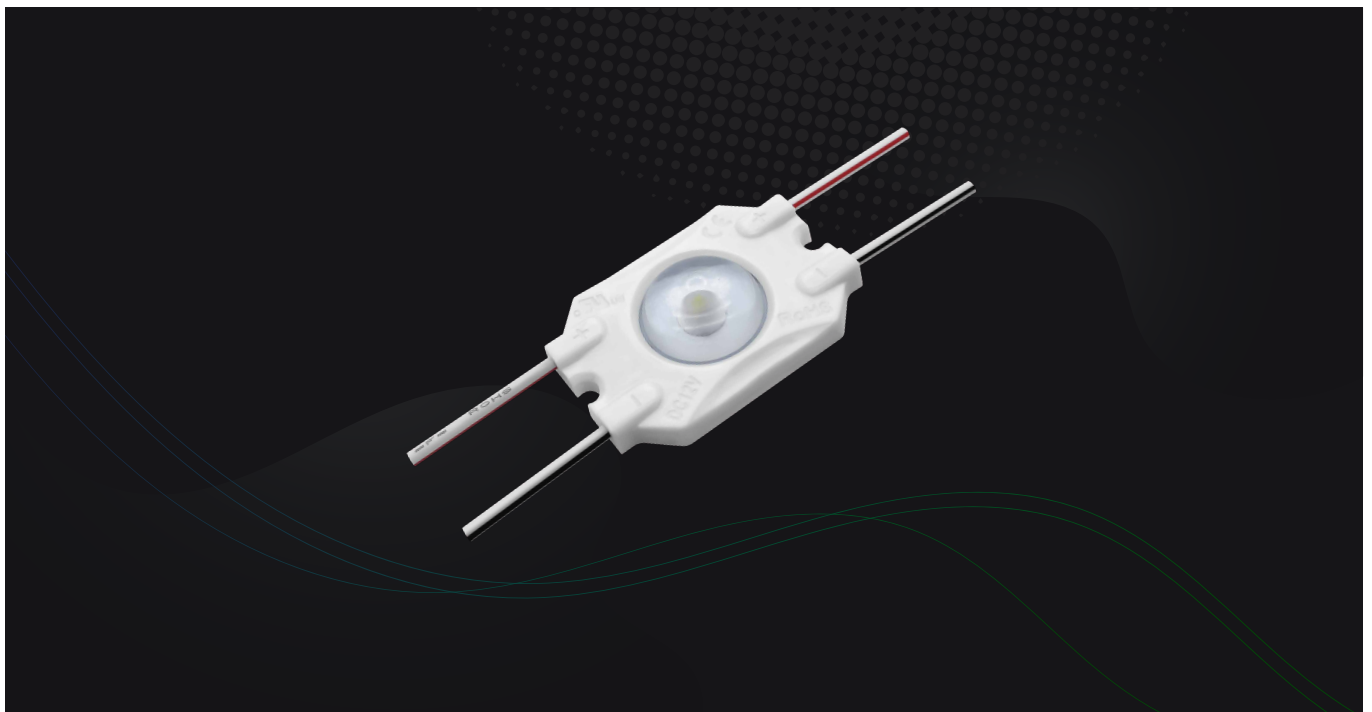


SLIMBOX LED MODULES



Features

- Powered by high output 2835 LED.
- Constant current.
- Batwing 170° optic lens.
- 50 pcs per string.
- CE, RoHS, UL, TUV, BIS, CB and LM-80 certified.

Application

- Apply to 3.5–15cm depth single-sided light box at airports, metros, banks, buildings and shopping malls, etc.

Parameters

Items	Parameters
Part Number	ZE01BB2
CCT (K)	7000
Beaming Angle (°)	170°
CRI (Ra)	≥75
Luminous Flux (lm)	65
Voltage (V)	DC12
Power (W)	0.72
Driving Method	Constant Current
Dimension (mm)	37*25.5*7.1
Working Tem. (°C)	-25 ~ +60
Storage Tem. (°C)	-25 ~ +70
Protection Grade	IP66

Dimension

Unit: mm

