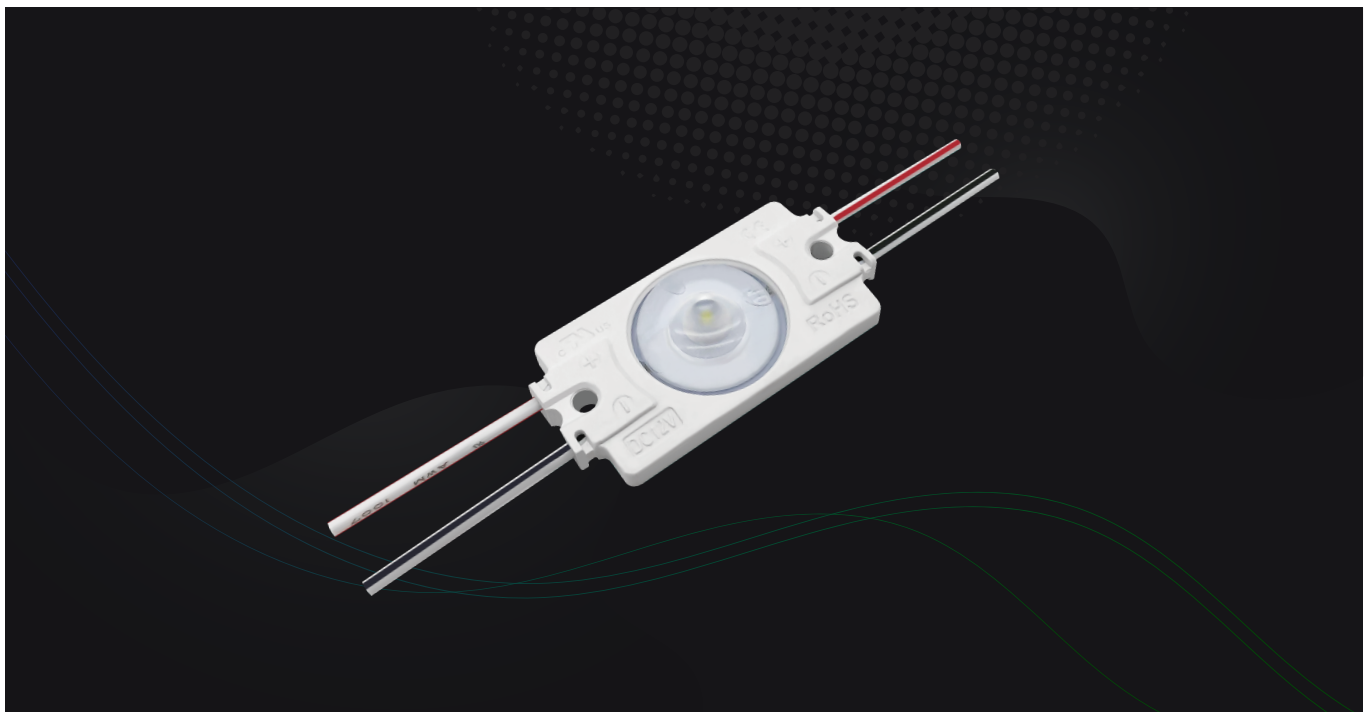


# SLIMBOX LED MODULES



## Features

- Powered by high output 3030 LED.
- Constant current.
- Batwing 160° optic lens.
- 20 pcs per string.
- CE, RoHS, UL, TUV, BIS, CB and LM-80 certified.

## Application

- Apply to 3.5–15cm depth single-sided light box at airports, metros, banks, buildings and shopping malls, etc.

## Parameters

Items	Parameters
Part Number	ZF01BB2
CCT (K)	7000
Beaming Angle (°)	160°
CRI (Ra)	≥75
Luminous Flux (lm)	125
Voltage (V)	DC12
Power (W)	1.32
Driving Method	Constant Current
Dimension (mm)	43*23*7.8
Working Tem. (°C)	-25 ~ +60
Storage Tem. (°C)	-25 ~ +70
Protection Grade	IP66

## Dimension

Unit: mm

