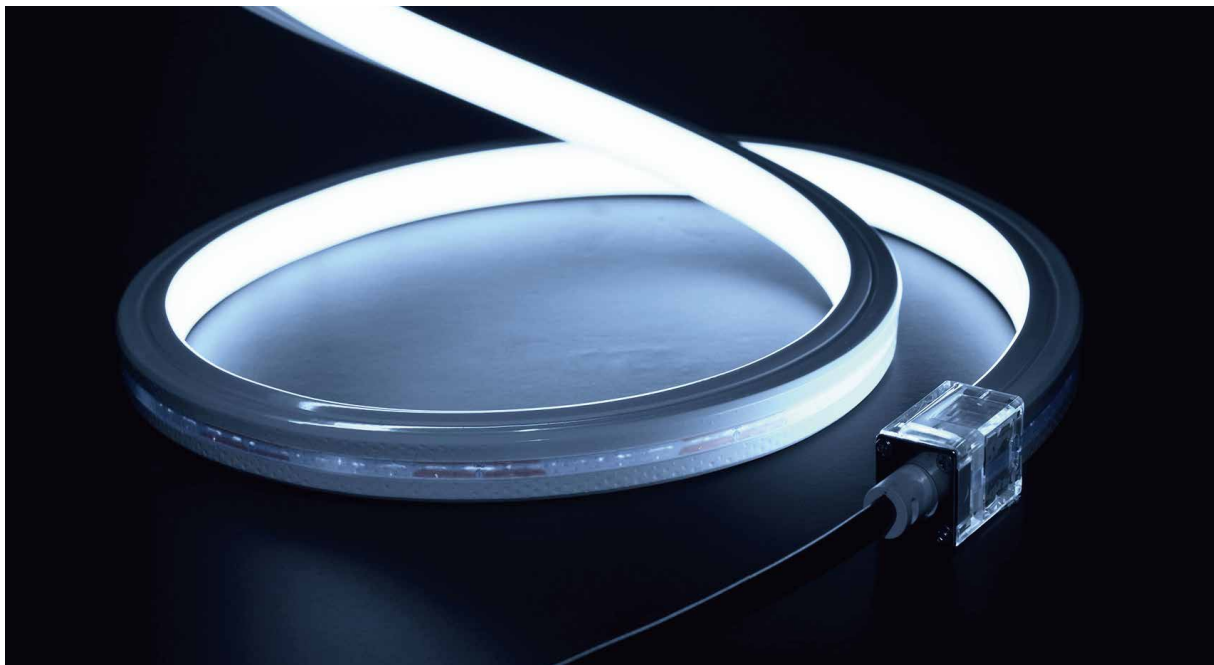


Model: SECOJC1-N1212

SILICONE LED FLEX NEON

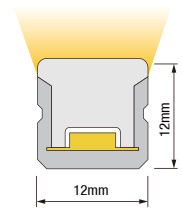
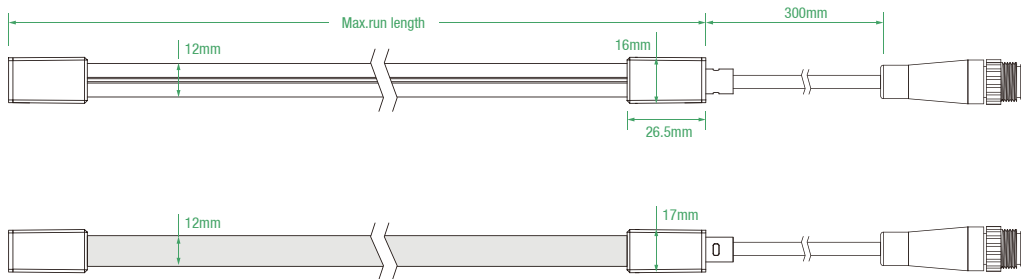




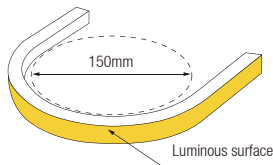
Model: SECOJC1-N1212

- High light transmittance, environmental protection grade silicone material, integrated extrusion molding process.
- Unique optical light distribution structure design, uniform lighting surface and no shadow.
- IP67 protection level, salt solution resistance, acids & alkalis, corrosive gases, fire and UV
- Excellent toughness, simple and stylish appearance, delicate and unique
- 3 years warranty, working life \geq 30000 hours;

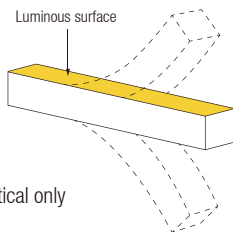
Dimension structure



Across section size's picture



Min bending diameter



Bend vertical only

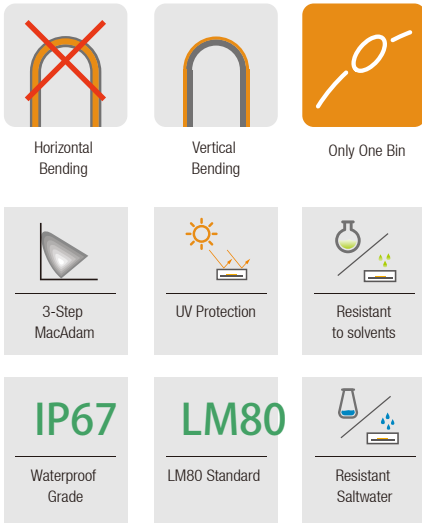
Electrical Parameter

Voltage	DC24V
LED PIN temperature	Max. 65 °C
Storage Temperature	-25 °C ~ 60 °C
Ambient temperature	Min.-25°C, Max (Table below)
CRI	>90

Specification

Power	5w/m	10w/m
Efficacy(lm/w)@4000K	69.4lm/w	67.7lm/w
Max ambient temperature	50 °C	45 °C

Due to the tolerance of the production and electrical components, output value and electrical power can vary up to 10%



Finished CCT (K)	Unit cut (mm)	CRI	Power (W)	Lumen (LM/m)	Efficacy (LM/w)	Max.run length(m)	CV/CC
● 2100 ±100	50	>90	5	290.8	58.2	19	CC/CV
			10	559.8	56.0	13	
● 2400 ±100	50	>90	5	289.6	57.9	19	CC/CV
			10	562.4	56.2	13	
● 2700 ±100	50	>90	5	349.5	69.9	19	CC/CV
			10	668.3	66.8	13	
● 3000 ±100	50	>90	5	329.7	65.9	19	CC/CV
			10	638.8	63.9	13	
● 3500 ⁺²⁰⁰ ₋₁₀₀	50	>90	5	354.1	70.8	19	CC/CV
			10	661.7	66.2	13	
● 4000 ⁺³⁰⁰ ₋₂₀₀	50	>90	5	347.1	69.4	19	CC/CV
			10	677.4	67.7	13	
● 5000 ⁺³⁰⁰ ₋₂₀₀	50	>90	5	346.7	69.3	19	CC/CV
			10	681.9	68.2	13	
● 6000 ⁺³⁰⁰ ₋₁₀₀	50	>90	5	336.2	67.2	19	CC/CV
			10	661.8	66.2	13	
● TW	50	>90	● 2.5	151.2	60.5	5	CV
			● 2.5	161.2	64.5	5	
			● 5	316	63.2	5	
● TW	50	>90	● 5	314.5	62.9	5	CV
			● 5	336.6	67.3	5	
			● 10	646.1	64.6	5	
● R	50	--	5	132	26.4	25	CC/CV
			10	276.7	27.7	17	
● G	50	--	5	374	74.8	19	CC/CV
			10	703	70.3	13	
● B	50	--	5	70	14.0	19	CC/CV
			10	129	12.9	13	
● Amber	50	--	5	27.9	5.6	25	CC/CV
			10	50.7	5.1	17	
● Pink	50	--	5	143	28.6	19	CC/CV
			10	278	27.8	13	
● RGB-R	62.5	--	1.7	34.2	20.1	5	CV
			3.3	69.1	20.9	5	
● RGB-G	62.5	--	1.7	111	65.3	5	CV
			3.3	214.5	65.0	5	
● RGB-B	62.5	--	1.7	20	11.8	5	CV
			3.3	40.2	12.2	5	
● RGB	62.5	--	5	174	34.8	5	CV
			10	288	28.8	5	

- TW: Tunable white, Testing CCT: 2700K+5400K
- Max series length refers to single side feed
- The above color temperature is the finished-product color temperature.
- The given data are typical values due to the tolerance of the production and electrical components, output value and electrical power can vary up to 10%
- Please don't walk on it without protection.

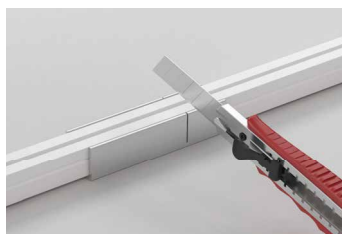
Cable Entry

	Integral plug	Combined end cap	Silicone end cap
<p>Front Cable Entry: The cable could be hidden in all directions by the flexible design.</p>			
<p>Side Cable Entry: The cable could be perfectly hidden to achieve seamless light connection.</p>			
<p>Bottom Cable Entry: The cable could be perfectly hidden to achieve seamless light connection.</p>			

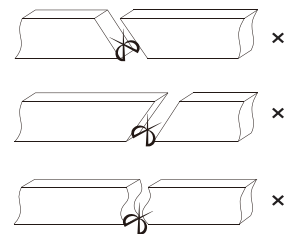
Cutting Mark



Remark: The bottom of the led strip has transparent window, the black marker is the cutting position



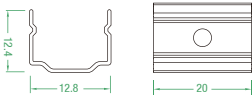
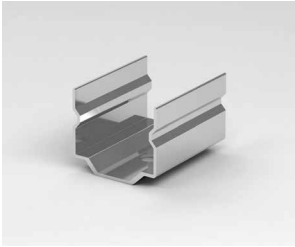
Use a cutting jig, vertical cutting precisely in the exact cutting position of led strip.



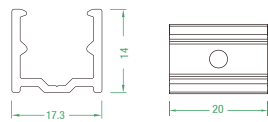
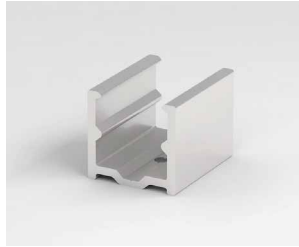
Please don't be feel free to cut and cut into an oblique angle or cambered section.

Mounting Way

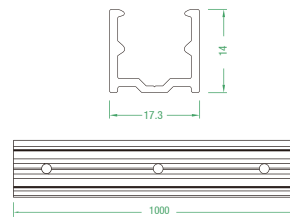
Stainless Steel Mounting clips



Aluminium Mounting clips



Aluminium Profile



Suspension Installation



Cautions:

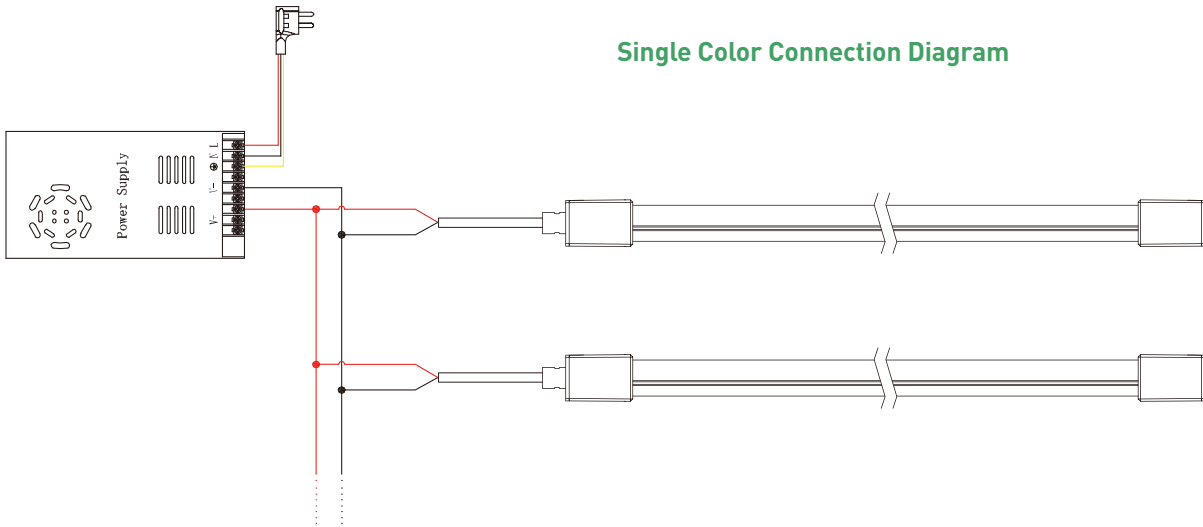
The unused product and unused product after unpacking should be sealed with the packaging bag to avoid prolonged exposure.

Tests showed that nail and benzene substances will have yellowing effects on silicone gel; in the new indoor decoration environment, epoxy floor paint, wall

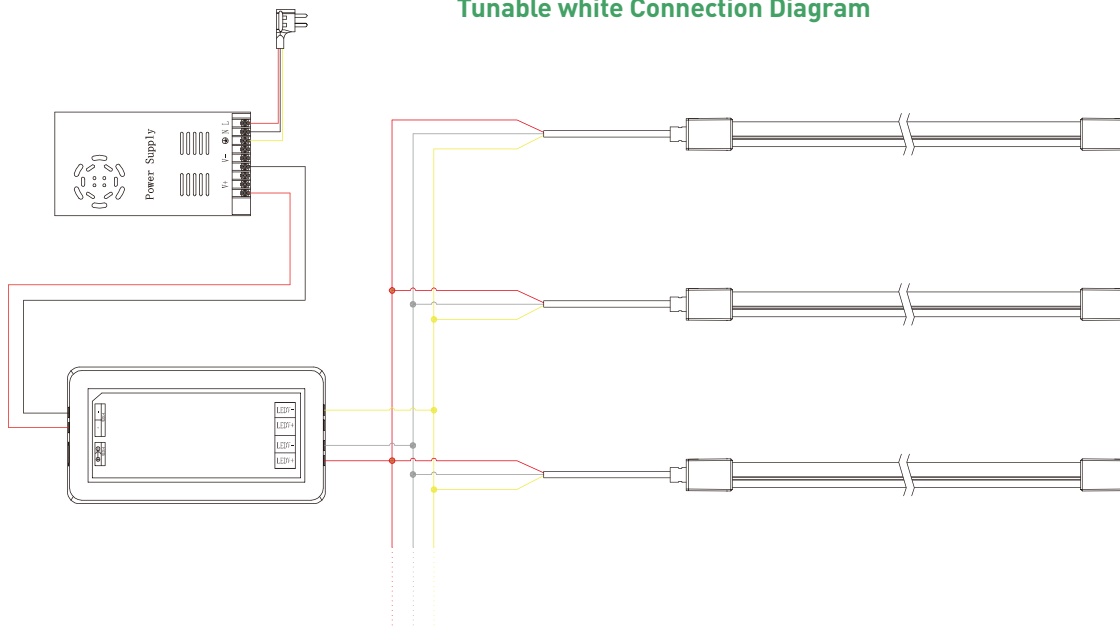
paint, wallpaper adhesive, various decoration materials or new furniture, possibly release of nail and benzene substances, it is recommended to remove formaldehyde and benzene or ventilate for a period of time in the new indoor decoration environment, and then install the neon strip to avoid yellowing of the silicone gel.

Wiring diagram

Single Color Connection Diagram



Tunable white Connection Diagram



RGB Connection Diagram

